



Installation Instructions

Model:	Polaris General
Description:	Subwoofer Install
Part Number:	MBQG-SUB-1
Assembly Time:	90 Min (1.5-Hours)

Before you begin, read through these instructions and check that all parts are present. Always disconnect negative battery terminal prior to installation. Please note that MB Quart cannot assume any responsibility for damage resulting from incorrect installation.

Parts List		
No.	Component Name	Qty
1	10" Subwoofer w/Enclosure (MBQG-SUB-1)	1

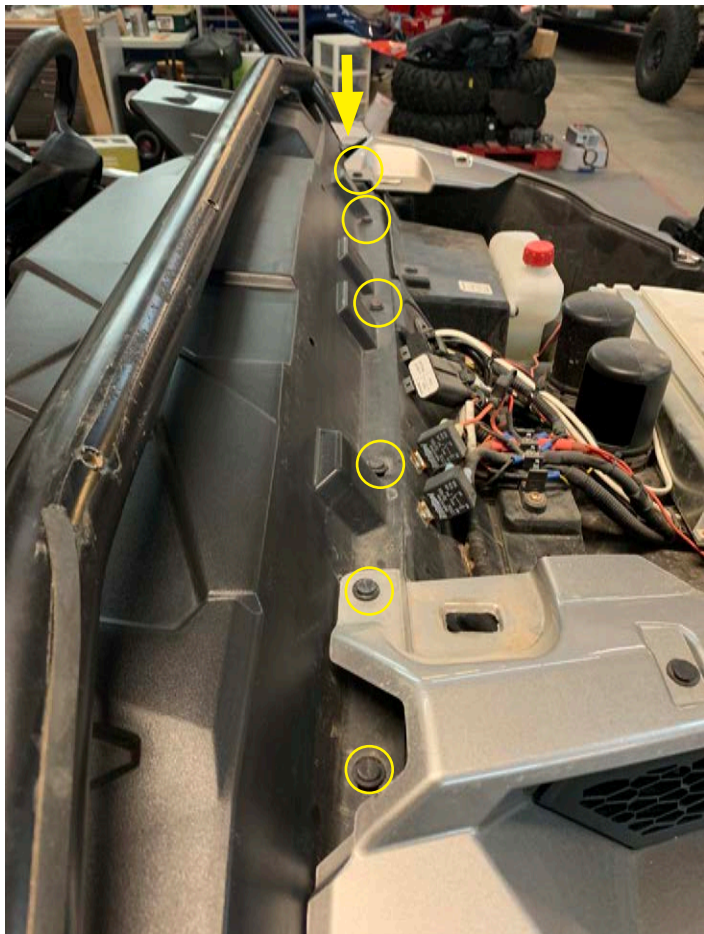
Tools Required	
1	Bojo Tool
2	Panel Clip Pliers
3	10mm & 13mm Socket
4	Ratchet
5	7mm & 13mm Wrench
6	T25 and T40 Torx Driver
7	11/32" Drill Bit
8	Drill
9	Phillips Screwdriver
10	4mm & 5mm Allen Wrench

Dash Disassembly

- Remove hood by turning two latches



- Remove seven push clips from front of dash

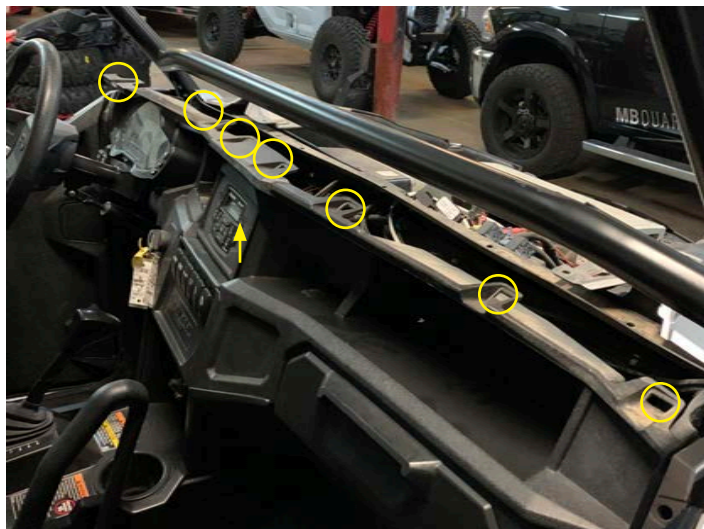


Dash Disassembly

- Remove top two push pins from driver and passenger door opening



- Lift front of dash at eight locations with Bojo tool



Dash Disassembly

- Remove if your machine has upper pocket



- Remove lower switch locations (If your vehicle has switches installed note connections and disconnect)



- Disconnect wires from back of 12 volt accessory port



Dash Disassembly

- Remove plastic nut from ignition switch and remove from dash



- Lower the steering column and disconnect wiring from the back of the instrument cluster and remove the two 10mm bolts to remove the instrument cluster



- Disconnect the connectors from the back of the light and four wheel drive switches



Dash Disassembly

- Remove two T40 bolts from the instrument cluster pocket



- Remove two T40 bolts in front of the shift knob



- Remove two T40 bolts from inside the glove box

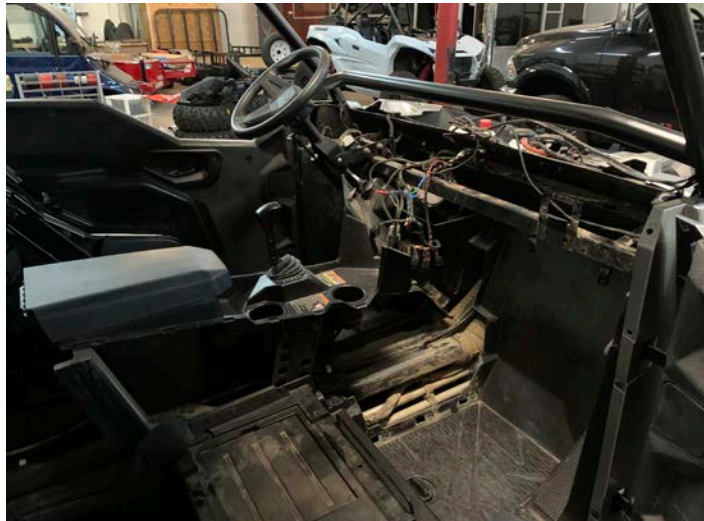


Dash Disassembly

- Carefully pull dash toward rear of vehicle by door opening on driver and passenger sides



- Carefully remove dash from vehicle by lifting up and out of the vehicle



- Remove seats from vehicle



Dash Disassembly

- If your General is a 4-seat version continue, if you have a 2-seat skip ahead.

Remove six push pins from the driver and passenger side rear center console



- Remove two push pins under center console lid and lift up center console and disconnect 12 volt accessory port in center console and remove center console from vehicle



- Remove two push pins from lower front center console and remove

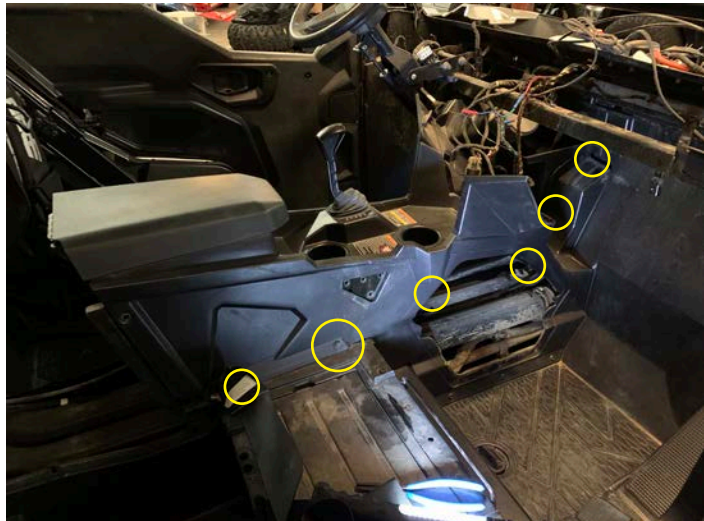


Dash Disassembly

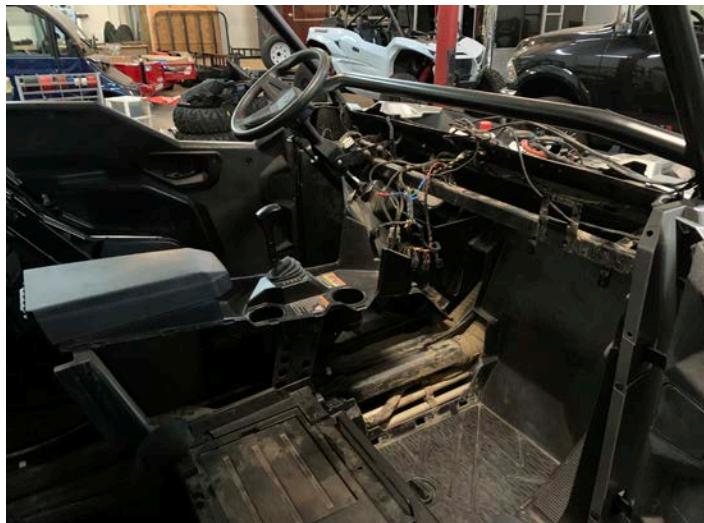
- Remove (4) 13mm bolts and the grab handle



- Remove six push pins and three T40 bolts



- Remove passenger center console side panel

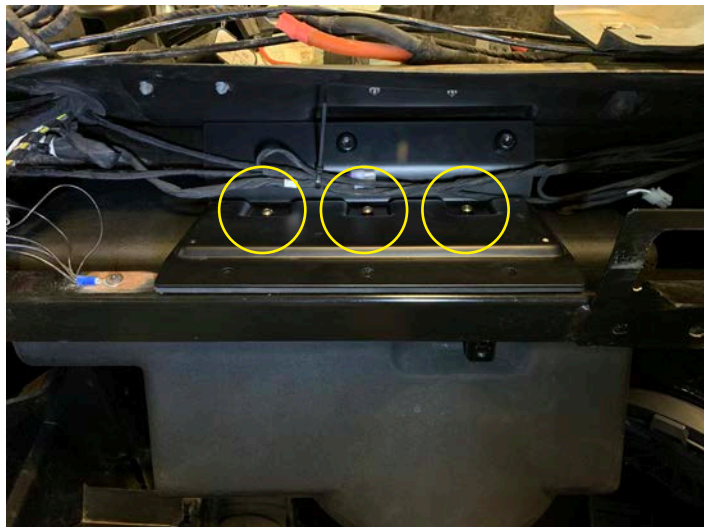


Subwoofer Enclosure Install

- Install amplifier plate using two T40 self cutting screws into the two existing holes circled and you may have to remove a wire clip if present and leave screws loose till another step



- Rotate enclosure toward bracket lifting upward and using a 4mm allen wrench loosely install the three M5 button head bolts with thread patch to the top of the enclosure

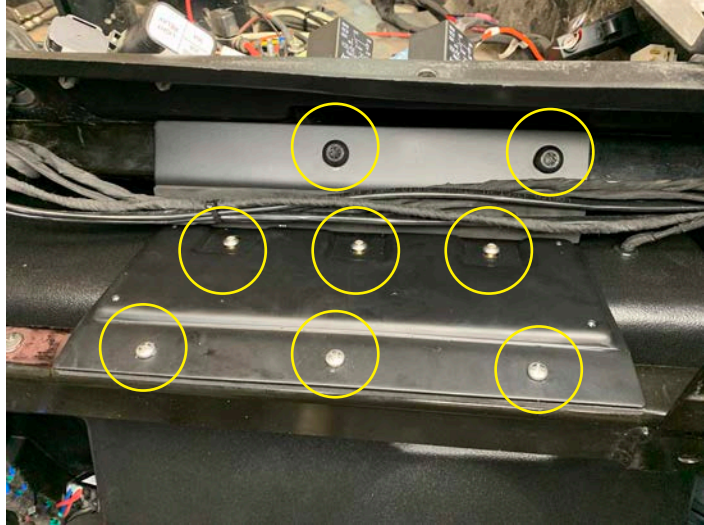


- Rotate enclosure toward bracket lifting upward and using a 4mm allen wrench, loosely install the three M5 button head bolts with thread patch to the top of the enclosure



Subwoofer Enclosure Install

- Tighten three M5 bolts on top of enclosure with a 4mm allen wrench and also tighten two T40 Torx bolts and three Phillips self tapping screws on the front of the plate



Reassembly

- Install front passenger center console, carefully sliding into place around subwoofer enclosure



- Install six push pins

NOTE

The two up high by firewall will need to be inserted from drivers side by steering wheel.



- Install three T40 bolts



Reassembly

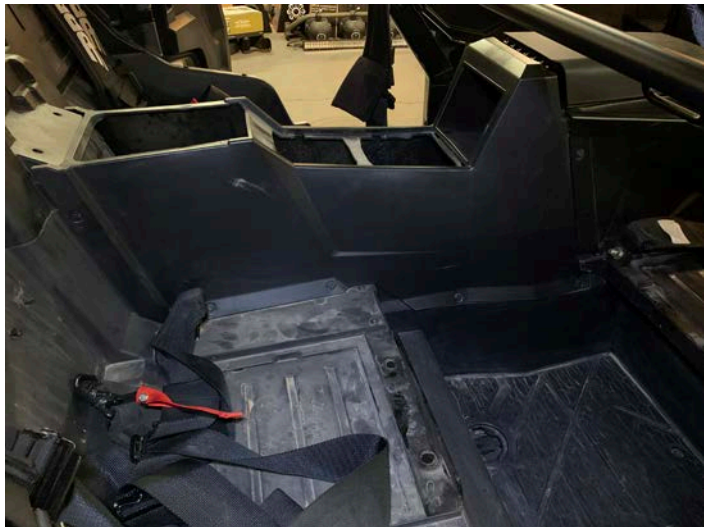
- Install passenger grab handle with four 13mm bolts



- Install center cover with two push pins



- If two-seat skip ahead if four-seat, then install rear console and install six push pins on driver and passenger side

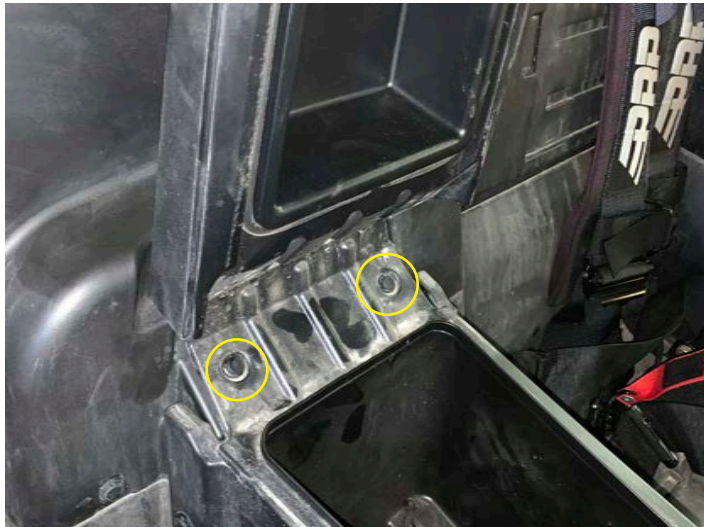


Reassembly

- Install rear glove box in rear center console (Remember to connect wires to bottom 12-volt accessory port)



- Install two push pins under glove box lid



- Re-install the dash in the vehicle

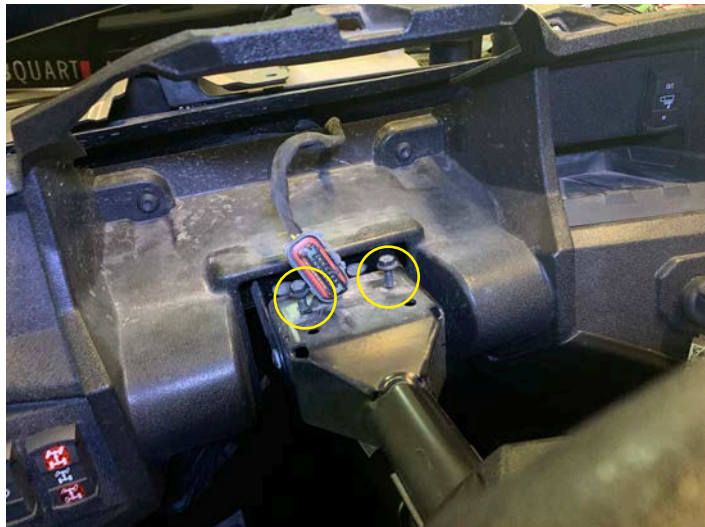


Reassembly

- Install key switch and align to detent



- Install two T40 bolts on driver side instrument cluster area



- Install two T40 bolts in center console



Reassembly

- Install two T40 bolts in passenger glove box



- Install instrument cluster with two 10mm bolts



- Connect instrument cluster connector



Reassembly

- Install top of dash, snapping eight push clips on front of dash



- Install six push pins on front of dash



Reassembly

- Install hood





FCC Notice

This equipment has been tested and found to comply with the limits for a Class B digital device, pursuant to part 15 of the FCC Rules. These limits are designed to provide reasonable protection against harmful interference in a mobile installation. This equipment generates, uses and can radiate radio frequency energy and, if not installed and used in accordance with the instructions, may cause harmful interference to radio communications. However, there is no guarantee that interference will not occur in a particular installation.

WARNING: Changes or modifications not expressly approved by the party responsible for compliance could void the user's authority to operate the equipment.

This equipment complied with FCC radiation exposure limits set forth for an uncontrolled environment. This equipment should be installed and operated with minimum distance 20cm between the radiator & your body.

WARRANTY

Maxxsonics USA Inc. warrants this product, to the original consumer purchaser, to be free from defects in material and workmanship for a period of one (1) year from the date of purchase. Maxxsonics USA Inc. will, at its discretion, repair or replace defective products during the warranty period. Components that prove to be defective in materials and workmanship under proper installation and use must be returned to the original authorized Maxxsonics USA Inc. retailer from where it was purchased. A photocopy of the original receipt must accompany the product being returned. The costs associated with removal, re-installation and freight are not the responsibility of Maxxsonics USA Inc. This warranty is limited to defective parts and specifically excludes any incidental or consequential damages connected therewith. To view the full warranty, please visit the website.

The Bluetooth® word mark and logos are registered trademarks owned by the Bluetooth SIG, Inc. and any use such marks by MB Quart is under license.

All product names, logos, and brands are property of their respective owners. All company, product and service names used in this literature are for identification purposes only. Use of these names, logos, and brands does not imply endorsement.

©2021 Maxxsonics USA, Inc.

MBQuart products are designed and engineered in the USA by



www.maxxsonics.com